

# WHISPERGEN

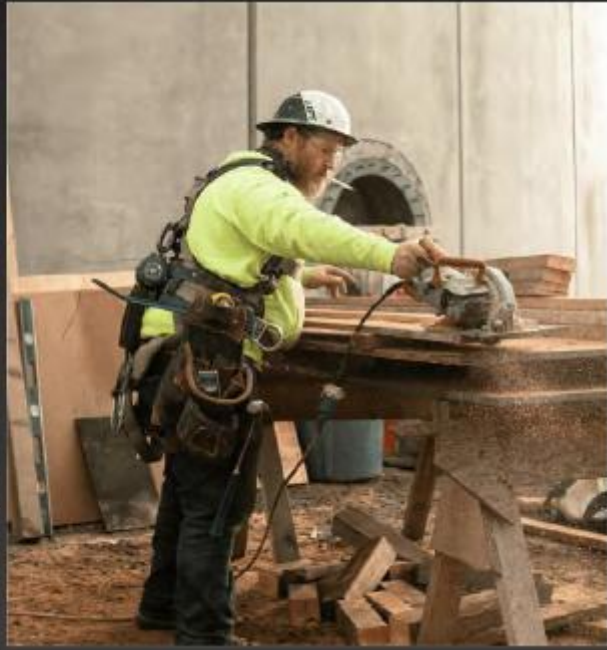


- HIGH PERFORMANCE
- INDUSTRIAL POWER STATION
- A MODERN ALTERNATIVE TO THE GASOLINE GENERATOR

# Capabilities



Meets the needs of high-power electrical appliances.



For use in harsh environments such as rain, cold, heat, mud, dust, etc..



Light and portable making it much easier to use than gasoline generators



It can be re-charged quickly, and it flexibly increases battery capacity



**WHISPERGEN**

# Advantages

Quiet

Emission Free

Maintenance Free





High Power

3600W Rated Power

20000W\* Peak Power

Empowering tools with robust power

\*Based on actual test data for loads such as welding machines and air compressors.



**Safe for outdoor use**

**IP54+** Dust- and waterproof

Thriving in heavy weather



**WHISPERGEN**



Unafraid of collisions  
Made for rugged conditions



## Fast Charging

Fully charged in 2.3 hours

90% charged in 1.8 hours

## Lightweight and Portable

Only 52 pounds





## Expandable capacity

Max. of 3 parallel expansion

Total capacity of 6912 Wh





# Applications



Interior Construction



Mining



Tunnel Operations



Survey and Exploration



Road Construction



Food Trucks



Film Crews



Emergency Applications



Heavy Construction

# Design Highlights



**Cascaded multilevel  
single-stage topology**

**10C discharge rate  
NCA battery cell**

**Self-developed  
high-performance  
power chip**

**97% Charging  
Efficiency AC-BMS**

**Laser welding +  
annular sealing for  
waterproofing**

**30-year rust-proof  
SGCC + 72h salt spray  
weather-resistant  
coating**

**V-shaped steel pipe  
+ all-steel sheet  
metal casing**

**Internal circulation  
natural cooling  
solution**



# Comparison



## WHISPERGEN



### Fuel Generator

**0 Noise**

Noise

**Loud**

Parallel connection

**Support**

Not support

**Not support**

Heavy-load equipment

**Support**

Not support

**Not support**


Maintenance

**Not needed**

Required

**Required**

# A closer look at how WhisperGen compares to a gasoline generator of similar rated power

Comparison	Gasoline Generator	
Rated Power	3600 W	3600 W
Peak Power	4320 W	20000 W
Operating Costs/Hour	\$2.021	\$0.504
Maintenance Req'd	Yes	No
Convenience of Use	Inconvenient to Start and Stop	Plug and Play
Noise	High Noise	0
Emissions	Toxic Exhaust	None
Weight	92.6 lbs	52.5 lbs
IP Grade	IP54	IP23

# Standard electric power stations can't do the job



**WHISPERGEN**

Heavy-load equipment **Support**

Working in harsh conditions **Support**


**Portable power station**

Heavy-load equipment **Not support**

Working in harsh conditions **Not support**

# WhisperGen Units pay for themselves

## Value Proposition

Comparison based on 1000 Hours of Usage	Gasoline Generator					
	Value	Unit Price in USD	Total in USD	Value	Unit Price in USD	Total in USD
Energy Consumption	554.5 gallons	\$2.95/gallon	\$1,635.78	3600 kWh	\$0.14/ kWh	\$504.00
Maintenance	6 hours	\$60/hour	\$360	Maintenance Free	0	\$0
Environmental	4.23 quarts	\$6/quart	\$25.38	Zero Emissions	0	\$0.00
Total Cost	\$2,021.16			\$504.00		

Projected payback of \$1517.16 per 1000 hours of usage



# Specifications

Basic parameters	
Model name	PG3600
Net weight	23.8kg
Size	494×502×198mm
Battery capacity	2304Wh
Protection level	IP54
Cooling method	Natural cooling
Indicator light	10-level indicator light
Standard	UN 38.3, IEC 62619, IEC 62477
Output	
Rated voltage	230V, Pure sine wave
Voltage range	230±5Vac
Frequency	50±0.5Hz
Rated power	3600W
150% overload	4000W~5400W>500s
200% overload	5400W~7200W>50s
250% overload	7200W~9000W>10s
Other overload	>9000W>1s
No-load consumption	≤30W

Input	
Rated voltage	230Vac
Input range	176~264 Vac
Maximum input power	1300W
Rated current	6A(Max.Input Current 8A)
Battery	
Battery type	NCA 21700
Power conversion efficiency	>90%
Battery pack SOC	<5%
Safety protection	Overcharge protection Over-discharge protection Overcurrent protection Over-temperature protection Short-circuit protection Overvoltage protection and so on
environment	
Operating temperature	Charge 5-40°C, discharge -15°C-55°C
Storage temperature	-20-60°C
Operating humidity	10-90%RH
Storage humidity	10-90%RH
Operating altitude	2000m



For additional information, find us on the web at  
[www.whispergenpower.com](http://www.whispergenpower.com)

or contact us directly at [sales@whispergenpower.com](mailto:sales@whispergenpower.com)